



ADJUDICATION RECORD
PURSUANT TO SECTION 8A (1) (e) and 8A (1) (g) OF THE
REGISTRATION OF TITLES CADASTRAL MAPPING AND TENURE CLARIFICATION (SPECIAL PROVISIONS) ACT

SYSTEMATIC ADJUDICATION AREA : PART OF SOUTHFIELD, ST. ELIZABETH (PART 2)

APPLICATION NO.	LAND INFORMATION							PERSONAL DETAILS			OCCUPANCY DETAILS								
	CADASTRAL MAP NUMBER	CADASTRAL MAP PARCEL NUMBER	LAND VALUATION NUMBER	AREA	PLACE	PARISH	VOLUME/FOLIO	PROPERTY ADDRESS	NATURE OF PARCEL	OWNER(S) DETAILS	NATURE BY WHICH LAND WAS ACQUIRED	NATURE OF OWNER DISABILITY	NAME, ADDRESS AND OCCUPATION OF GUARDIAN	NATURE OF TITLE	DETAILS OF ENCUMBRANCES	RESTRICTIONS ON POWER TO DEAL WITH LAND	DETAILS OF PERSON ENTITLED TO BENEFIT OF RESTRICTION	DOCUMENTS PRESENTED	DATE OF COMPLETION OF APPLICATION FORM
ASD009458	CM1166004-868	116600401		581.15 Square Meter	SOUTHFIELD ALSO KNOWN AS SEAVIEW	St. Elizabeth		Seaview District, St. Elizabeth	Private	- Sonia Marie Williams-Miller Farmer of Seaview District, Southfield P.O. St. Elizabeth Jamaica - Michael Williams Farmer of Seaview District, Southfield P.O. St. Elizabeth Jamaica	Purchase			Absolute					2022-01-19
ASD009075	CM1166004-868	116600402		2318.81 Square Meter	SOUTHFIELD ALSO KNOWN AS SEAVIEW	St. Elizabeth		Seaview District, St. Elizabeth	Private	- Donald Jones Farmer of Seaview District, Southfield P.O. St. Elizabeth Jamaica	Possession			Absolute					2022-01-19
ASD009102	CM1166004-868	116600403		1878.05 Square Meter	SOUTHFIELD ALSO KNOWN AS SEAVIEW	St. Elizabeth		Seaview District, St. Elizabeth	Private	- Wavelyn Jones-Mitchell Retired Housekeeper of Seaview District, Southfield P.O. St. Elizabeth Jamaica	Possession			Absolute					2022-01-19
ASD009000	CM1166004-868	116600404		2309.47 Square Meter	SOUTHFIELD ALSO KNOWN AS SEAVIEW	St. Elizabeth		Seaview District, St. Elizabeth	Private	- Clifford Sampson Jones Farmer of Seaview District, Southfield P.O. St. Elizabeth Jamaica	Purchase			Absolute					2022-01-19
ASD009117	CM1166004-868	116600405		563.7 Square Meter	SOUTHFIELD ALSO KNOWN AS SEAVIEW	St. Elizabeth		Seaview District, St. Elizabeth	Private	- Jennifer Rose Hill Shopkeeper of Seaview District, Southfield P.O. St. Elizabeth Jamaica	Possession			Absolute					2022-01-19
ASD009219	CM1166004-868	116600406		444.42 Square Meter	SOUTHFIELD ALSO KNOWN AS SEAVIEW	St. Elizabeth		Seaview District, St. Elizabeth	Private	- Rosemarie Dyannie Jones Housewife of 100 Jackson Boulevard, Mandeville P.O. Manchester Jamaica	Possession			Absolute					2022-01-19
ASD009108	CM1166004-868	116600407		491.18 Square Meter	SOUTHFIELD ALSO KNOWN AS SEAVIEW	St. Elizabeth		Seaview District, St. Elizabeth	Private	- Curmlin Hyacinth Jones-Banton Housewife of Tryall District, Junction P.O. St. Elizabeth Jamaica	Possession			Absolute					2022-01-19
ASD009074	CM1166004-868	116600408		349.84 Square Meter	SOUTHFIELD ALSO KNOWN AS SEAVIEW	St. Elizabeth		Seaview District, St. Elizabeth	Private	- Whitney Leroy Kenton Farmer of Seaview District, Southfield P.O. St. Elizabeth Jamaica	Possession			Absolute					2022-01-19
ASD009070	CM1166004-868	116600409		1708.64 Square Meter	SOUTHFIELD ALSO KNOWN AS SEAVIEW	St. Elizabeth		Seaview District, St. Elizabeth	Private	- Lilybelle Elonis Jones Farmer of Seaview District, Southfield P.O. St. Elizabeth Jamaica	Possession			Absolute					2022-01-19
ASD009116	CM1166004-868	116600410		737.19 Square Meter	SOUTHFIELD ALSO KNOWN AS SEAVIEW	St. Elizabeth		Seaview District, St. Elizabeth	Private	- Lilybelle Elonis Jones Farmer of Seaview District, Southfield P.O. St. Elizabeth Jamaica	Possession			Absolute					2022-01-19
ASD009143	CM1166004-868	116600411		4344.56 Square Meter	SOUTHFIELD ALSO KNOWN AS SEAVIEW	St. Elizabeth		Seaview District, St. Elizabeth	Private	- Byron Osbourne Jones Farmer of Southfield District, Southfield P.O. St. Elizabeth Jamaica	Gift			Absolute					2022-01-19
ASD009365	CM1166004-868	116600412		4027.6 Square Meter	SOUTHFIELD ALSO KNOWN AS SEAVIEW	St. Elizabeth		Seaview District, St. Elizabeth	Crown	- Commissioner of Lands of 20 North Street Kingston Jamaica	Special Provisions Act			Absolute					2022-01-19
ASD009461	CM1166004-868	116600413		585.42 Square Meter	SOUTHFIELD ALSO KNOWN AS SEAVIEW	St. Elizabeth		Seaview District, St. Elizabeth	Crown	- Commissioner of Lands of 20 North Street Kingston Jamaica	Special Provisions Act			Absolute					2022-01-19
ASD009110	CM1166004-868	116600414		1116.6 Square Meter	SOUTHFIELD ALSO KNOWN AS SEAVIEW	St. Elizabeth		Seaview District, St. Elizabeth	Private	- Delphine Dorothy Jones Businesswoman of Seaview District, Southfield P.O. St. Elizabeth Jamaica	Possession			Absolute					2022-01-19
ASD009146	CM1166004-868	116600417		549.06 Square Meter	SOUTHFIELD ALSO KNOWN AS SEAVIEW	St. Elizabeth		Seaview District, St. Elizabeth	Private	- Dave O'Brien Ramsay of 1210-2900 Jane Street North York Ontario M3N 2J7 Canada	Purchase			Absolute					2022-01-19



ADJUDICATION RECORD
PURSUANT TO SECTION 8A (1) (e) and 8A (1) (g) OF THE
REGISTRATION OF TITLES CADASTRAL MAPPING AND TENURE CLARIFICATION (SPECIAL PROVISIONS) ACT

SYSTEMATIC ADJUDICATION AREA : PART OF SOUTHFIELD, ST. ELIZABETH (PART 2)

APPLICATION NO.	LAND INFORMATION								PERSONAL DETAILS			OCCUPANCY DETAILS							
	CADASTRAL MAP NUMBER	CADASTRAL MAP PARCEL NUMBER	LAND VALUATION NUMBER	AREA	PLACE	PARISH	VOLUME/FOLIO	PROPERTY ADDRESS	NATURE OF PARCEL	OWNER(S) DETAILS	NATURE BY WHICH LAND WAS ACQUIRED	NATURE OF OWNER DISABILITY	NAME, ADDRESS AND OCCUPATION OF GUARDIAN	NATURE OF TITLE	DETAILS OF ENCUMBRANCES	RESTRICTIONS ON POWER TO DEAL WITH LAND	DETAILS OF PERSON ENTITLED TO BENEFIT OF RESTRICTION	DOCUMENTS PRESENTED	DATE OF COMPLETION OF APPLICATION FORM
ASD009104	CM1166004-868	116600418		583.5 Square Meter	SOUTHFIELD ALSO KNOWN AS SEAVIEW	St. Elizabeth		Seaview District, St. Elizabeth	Private	- Zabareia Elizabeth Fairman Farmer of Seaview District, Southfield P.O. St. Elizabeth Jamaica	Possession			Absolute					2022-01-19
ASD009062	CM1166004-868	116600419		1193.01 Square Meter	SOUTHFIELD ALSO KNOWN AS SEAVIEW	St. Elizabeth		Seaview District, St. Elizabeth	Private	- Iris Jones-Trowers Housewife of Seaview District, Southfield P.O. St. Elizabeth Jamaica	Possession			Absolute			- Property Tax Receipts		2022-01-19
ASD009179	CM1166004-868	116600420		1981.94 Square Meter	SOUTHFIELD ALSO KNOWN AS SEAVIEW	St. Elizabeth		Seaview District, St. Elizabeth	Private	- Dianne Marie Vassell Returns Processor of 56 Lindylo Road, North York Ontario M9M 2B2 Canada	Purchase			Absolute					2022-01-19
ASD009134	CM1166004-868	116600421		1778.56 Square Meter	SOUTHFIELD ALSO KNOWN AS SEAVIEW	St. Elizabeth		Seaview District, St. Elizabeth	Private	- Byron Osbourne Jones Farmer of Southfield District, Southfield P.O. St. Elizabeth Jamaica	Possession			Absolute					2022-01-19
ASD009138	CM1166004-868	116600422		2513.26 Square Meter	SOUTHFIELD ALSO KNOWN AS SEAVIEW	St. Elizabeth		Seaview District, St. Elizabeth	Private	- Byron Osbourne Jones Farmer of Southfield District, Southfield P.O. St. Elizabeth Jamaica	Possession			Absolute					2022-01-19
ASD009105	CM1166004-868	116600424		1493.27 Square Meter	SOUTHFIELD ALSO KNOWN AS SEAVIEW	St. Elizabeth		Seaview District, St. Elizabeth	Private	- Orlando Roy Jones Taxi Driver of Seaview District, Southfield P.O. St. Elizabeth Jamaica	Possession			Absolute					2022-01-19
ASD009264	CM1166004-868	116600425		843.19 Square Meter	SOUTHFIELD ALSO KNOWN AS SEAVIEW	St. Elizabeth		Seaview District, St. Elizabeth	Private	- Tashana Sydnia Soares Registered Nurse of 3060 Crystal Way, Miramar Florida 33025 United States - Ann Lawrence Underwriter of 9801 Glacier Drive, Miramar Florida 33025 United States	Possession			Absolute	Right of Way				2022-01-19
ASD009372	CM1166004-868	116600426		696.15 Square Meter	SOUTHFIELD ALSO KNOWN AS SEAVIEW	St. Elizabeth		Seaview District, St. Elizabeth	Private	- Michael Vassell Welder of 8 Devon Close Birmingham B20 2PD United Kingdom	Possession			Absolute	Right of Way				2022-01-19
ASD009067	CM1166004-868	116600427		659.36 Square Meter	SOUTHFIELD ALSO KNOWN AS SEAVIEW	St. Elizabeth		Seaview District, St. Elizabeth	Private	- Harvey Lyn Vassall Farmer of Seaview District, Southfield P.O. St. Elizabeth Jamaica	Possession			Absolute					2022-01-19
ASD009077	CM1166004-868	116600429		924.42 Square Meter	SOUTHFIELD ALSO KNOWN AS SEAVIEW	St. Elizabeth		Seaview District, St. Elizabeth	Private	- Milton Venris Vassell Retired Manager of 45 NE 172ND Street, North Miami Beach Florida 33162 United States	Possession			Absolute	Right of Way				2022-01-19
ASD009057	CM1166004-868	116600430		983.06 Square Meter	SOUTHFIELD ALSO KNOWN AS SEAVIEW	St. Elizabeth		Seaview District, St. Elizabeth	Private	- Alrick Albert Vassell Farmer of Seaview District, Southfield P.O. St. Elizabeth Jamaica	Possession			Absolute			- Survey Plan Examination No. : PE: 342713		2022-01-19
ASD009066	CM1166004-868	116600431		1310.81 Square Meter	SOUTHFIELD ALSO KNOWN AS SEAVIEW	St. Elizabeth		Seaview District, St. Elizabeth	Private	- Daselin Osbourne Housewife of Seaview District, Southfield P.O. St. Elizabeth Jamaica	Possession			Absolute	Right of way				2022-01-19
ASD009071	CM1166004-868	116600432		381.28 Square Meter	SOUTHFIELD ALSO KNOWN AS SEAVIEW	St. Elizabeth		Seaview District, St. Elizabeth	Private	- Kavel Nyoka Bromfield-Marsh Home Health Aid Nurse of Seaview District, Southfield P.O. St. Elizabeth Jamaica - Rhoel Jerome O'neil Marsh Electrician of 1801 Utopia Dr, Miramar Florida 33023 United States	Possession			Absolute					2022-01-19



ADJUDICATION RECORD
PURSUANT TO SECTION 8A (1) (e) and 8A (1) (g) OF THE
REGISTRATION OF TITLES CADASTRAL MAPPING AND TENURE CLARIFICATION (SPECIAL PROVISIONS) ACT

SYSTEMATIC ADJUDICATION AREA : PART OF SOUTHFIELD, ST. ELIZABETH (PART 2)

APPLICATION NO.	LAND INFORMATION								PERSONAL DETAILS			OCCUPANCY DETAILS							
	CADASTRAL MAP NUMBER	CADASTRAL MAP PARCEL NUMBER	LAND VALUATION NUMBER	AREA	PLACE	PARISH	VOLUME/FOLIO	PROPERTY ADDRESS	NATURE OF PARCEL	OWNER(S) DETAILS	NATURE BY WHICH LAND WAS ACQUIRED	NATURE OF OWNER DISABILITY	NAME, ADDRESS AND OCCUPATION OF GUARDIAN	NATURE OF TITLE	DETAILS OF ENCUMBRANCES	RESTRICTIONS ON POWER TO DEAL WITH LAND	DETAILS OF PERSON ENTITLED TO BENEFIT OF RESTRICTION	DOCUMENTS PRESENTED	DATE OF COMPLETION OF APPLICATION FORM
ASD009091	CM1166004-868	116600433		1004.46 Square Meter	SOUTHFIELD ALSO KNOWN AS SEAVIEW	St. Elizabeth		Seaview District, St. Elizabeth	Private	- Raymond Vassell Construction Worker of Seaview District, Southfield P.O. St. Elizabeth Jamaica	Possession			Absolute	Right of Way				2022-01-19
ASD009415	CM1166004-868	116600434		1545.69 Square Meter	SOUTHFIELD ALSO KNOWN AS SEAVIEW	St. Elizabeth		Seaview District, St. Elizabeth	Private	- Alana Vassell Home Health Aide of Seaview District, Southfield P.O. St. Elizabeth Jamaica	Possession			Absolute	Right of Way		- Survey Plan Examination No. : PE: 342713		2022-01-19
ASD009072	CM1166004-868	116600435		564.67 Square Meter	SOUTHFIELD ALSO KNOWN AS SEAVIEW	St. Elizabeth		Seaview District, St. Elizabeth	Private	- Chadwick Earle Sancroft Mason of Seaview District, Southfield P.O. St. Elizabeth Jamaica	Possession			Absolute					2022-01-19
ASD009246	CM1166004-868	116600436		1432.68 Square Meter	SOUTHFIELD ALSO KNOWN AS SEAVIEW	St. Elizabeth		Seaview District, St. Elizabeth	Private	- Hilrett Soares Nurse Aid of 9731 Glacier Dr, Miramar Florida 33025 United States	Possession			Absolute					2022-01-19
ASD009396	CM1166004-868	116600437		986.83 Square Meter	SOUTHFIELD ALSO KNOWN AS SEAVIEW	St. Elizabeth		Seaview District, St. Elizabeth	Private	- Michael Vassell Welder of 8 Devon Close Birmingham B20 2PD United Kingdom	Possession			Absolute	Right of Way				2022-01-19
ASD009369	CM1166004-868	116600438		1032.66 Square Meter	SOUTHFIELD ALSO KNOWN AS SEAVIEW	St. Elizabeth		Seaview District, St. Elizabeth	Private	- Jacqueline Nicola Vassell Nurse of 1385 Ashley River Rd Apt 26C, Charleston South Carolina 29407 United States	Possession			Absolute					2022-01-19
ASD009201	CM1166004-868	116600439		1030.03 Square Meter	SOUTHFIELD ALSO KNOWN AS SEAVIEW	St. Elizabeth		Seaview District, St. Elizabeth	Private	- Cordival Vassall Retired of 17 Miller Crescent, Portmore St. Catherine Jamaica	Possession			Absolute					2022-01-19
ASD009078	CM1166004-868	116600440		479.15 Square Meter	SOUTHFIELD ALSO KNOWN AS SEAVIEW	St. Elizabeth		Seaview District, St. Elizabeth	Private	- Norris Dwight Jones Businesswoman of Seaview District, Southfield P.O St. Elizabeth Jamaica - Karen Patricia Jones Businesswoman of Seaview District, Southfield P.O St. Elizabeth Jamaica	Gift			Absolute	One Holding		- Property Tax Receipts		2022-01-19



ADJUDICATION RECORD
PURSUANT TO SECTION 8A (1) (e) and 8A (1) (g) OF THE
REGISTRATION OF TITLES CADASTRAL MAPPING AND TENURE CLARIFICATION (SPECIAL PROVISIONS) ACT

SYSTEMATIC ADJUDICATION AREA : PART OF SOUTHFIELD, ST. ELIZABETH (PART 2)

APPLICATION NO.	LAND INFORMATION								PERSONAL DETAILS			OCCUPANCY DETAILS							
	CADASTRAL MAP NUMBER	CADASTRAL MAP PARCEL NUMBER	LAND VALUATION NUMBER	AREA	PLACE	PARISH	VOLUME/FOLIO	PROPERTY ADDRESS	NATURE OF PARCEL	OWNER(S) DETAILS	NATURE BY WHICH LAND WAS ACQUIRED	NATURE OF OWNER DISABILITY	NAME, ADDRESS AND OCCUPATION OF GUARDIAN	NATURE OF TITLE	DETAILS OF ENCUMBRANCES	RESTRICTIONS ON POWER TO DEAL WITH LAND	DETAILS OF PERSON ENTITLED TO BENEFIT OF RESTRICTION	DOCUMENTS PRESENTED	DATE OF COMPLETION OF APPLICATION FORM
ASD009084	CM1166004-868	116600441		394.34 Square Meter	SOUTHFIELD ALSO KNOWN AS SEAVIEW	St. Elizabeth		Seaview District, St. Elizabeth	Private	- Norris Dwight Jones Businesswoman of Seaview District, Southfield P.O St. Elizabeth Jamaica - Karen Patricia Jones Businesswoman of Seaview District, Southfield P.O St. Elizabeth Jamaica	Gift			Absolute	One Holding			- Property Tax Receipts	2022-01-19
ASD009371	CM1166004-868	116600442		1310.78 Square Meter	SOUTHFIELD ALSO KNOWN AS SEAVIEW	St. Elizabeth		Seaview District, St. Elizabeth	Private	- Beverley Kay Kenton Shopkeeper of Seaview District, Southfield P.O. St. Elizabeth Jamaica	Possession			Absolute					2022-01-19
ASD009107	CM1166004-868	116600443		731.6 Square Meter	SOUTHFIELD ALSO KNOWN AS SEAVIEW	St. Elizabeth		Seaview District, St. Elizabeth	Crown	- Commissioner of Lands of 20 North Street Kingston Jamaica	Special Provisions Act			Absolute					2022-01-19
ASD009337	CM1166004-868	116600444		592.38 Square Meter	SOUTHFIELD ALSO KNOWN AS SEAVIEW	St. Elizabeth		Seaview District, St. Elizabeth	Private	- Jacqueline Nicola Vassell Nurse of 1385 Ashley River Rd Apt 26C, Charleston South Carolina 29407 United States	Possession			Absolute					2022-01-19
ASD009043	CM1166004-868	116600445		2377.08 Square Meter	SOUTHFIELD ALSO KNOWN AS SEAVIEW	St. Elizabeth		Seaview District, St. Elizabeth	Private	- Michael Hugh Lewin Farmer of Seaview District, Southfield P.O St. Elizabeth Jamaica - Jusann Lewin Domestic Worker of 3434 Foxcroft Rd, Apt 202 Miramar Florida 33020 United States	Gift			Absolute					2022-01-19
ASD009391	CM1166004-868	116600446		6598.58 Square Meter	SOUTHFIELD ALSO KNOWN AS SEAVIEW	St. Elizabeth		Seaview District, St. Elizabeth	Private	- Beaulah Jones Retired Caregiver of Seaview District, Southfield P.O St. Elizabeth Jamaica	Possession			Absolute					2022-01-19
ASD009038	CM1166005-871	116600501		1114.13 Square Meter	SOUTHFIELD ALSO KNOWN AS SEAVIEW	St. Elizabeth		Seaview District, St. Elizabeth	Private	- Daphnie Zatalyn McDonald Domestic Helper of Seaview District, Southfield P.O St. Elizabeth Jamaica	Gift			Absolute					2022-01-19
ASD009058	CM1166005-871	116600502		8360.04 Square Meter	SOUTHFIELD ALSO KNOWN AS SEAVIEW	St. Elizabeth		Seaview District, St. Elizabeth	Private	- Raldo Jones Farmer of Seaview District, Southfield P.O. St. Elizabeth Jamaica	Purchase			Absolute					2022-01-19
ASD009039	CM1166005-871	116600503		970.59 Square Meter	SOUTHFIELD ALSO KNOWN AS SEAVIEW	St. Elizabeth		Seaview District, St. Elizabeth	Private	- Onandy Romaro Wright Marketing Officer of Seaview District, Southfield P.O St. Elizabeth Jamaica	Gift			Absolute					2022-01-19



ADJUDICATION RECORD
PURSUANT TO SECTION 8A (1) (e) and 8A (1) (g) OF THE
REGISTRATION OF TITLES CADASTRAL MAPPING AND TENURE CLARIFICATION (SPECIAL PROVISIONS) ACT

SYSTEMATIC ADJUDICATION AREA : PART OF SOUTHFIELD, ST. ELIZABETH (PART 2)

APPLICATION NO.	LAND INFORMATION									PERSONAL DETAILS			OCCUPANCY DETAILS						
	CADASTRAL MAP NUMBER	CADASTRAL MAP PARCEL NUMBER	LAND VALUATION NUMBER	AREA	PLACE	PARISH	VOLUME/FOLIO	PROPERTY ADDRESS	NATURE OF PARCEL	OWNER(S) DETAILS	NATURE BY WHICH LAND WAS ACQUIRED	NATURE OF OWNER DISABILITY	NAME, ADDRESS AND OCCUPATION OF GUARDIAN	NATURE OF TITLE	DETAILS OF ENCUMBRANCES	RESTRICTIONS ON POWER TO DEAL WITH LAND	DETAILS OF PERSON ENTITLED TO BENEFIT OF RESTRICTION	DOCUMENTS PRESENTED	DATE OF COMPLETION OF APPLICATION FORM
ASD009059	CM1166005-871	116600504		1318.96 Square Meter	SOUTHFIELD ALSO KNOWN AS SEAVIEW	St. Elizabeth		Seaview District, St. Elizabeth	Private	- Rosemarie Jones Farmer of Seaview District, Southfield P.O. St. Elizabeth Jamaica	Gift			Absolute					2022-01-19
ASD009061	CM1166005-871	116600506		2399.62 Square Meter	SOUTHFIELD ALSO KNOWN AS SEAVIEW	St. Elizabeth		Seaview District, St. Elizabeth	Private	- Garfield Roy Mclean Farmer of Seaview District, Southfield P.O. St. Elizabeth Jamaica	Gift			Absolute					2022-01-19
ASD008995	CM1166005-871	116600508		5856.58 Square Meter	SOUTHFIELD ALSO KNOWN AS SEAVIEW	St. Elizabeth		Seaview District, St. Elizabeth	Private	- Norma Elaine Jones Farmer of Seaview District, Southfield P.O. St. Elizabeth Jamaica - Nashford Jones Farmer of Seaview District, Southfield P.O. St. Elizabeth Jamaica	Possession			Absolute					2022-01-19
ASD008998	CM1166005-871	116600509		2528.62 Square Meter	SOUTHFIELD ALSO KNOWN AS SEAVIEW	St. Elizabeth		Seaview District, St. Elizabeth	Private	- Clifford Sampson Jones Farmer of Seaview District, Southfield P.O. St. Elizabeth Jamaica	Purchase			Absolute					2022-01-19
ASD009370	CM1166005-871	116600511		1.0433 Hectare	SOUTHFIELD ALSO KNOWN AS SEAVIEW	St. Elizabeth		Seaview District, St. Elizabeth	Crown	- Commissioner of Lands of 20 North Street Kingston Jamaica	Special Provisions Act			Absolute					2022-01-19
ASD009068	CM1166005-871	116600512		2120.69 Square Meter	SOUTHFIELD ALSO KNOWN AS SEAVIEW	St. Elizabeth		Seaview District, St. Elizabeth	Private	- Martin Luther Buchanan Farmer of Seaview District, Southfield P.O. St. Elizabeth Jamaica	Possession			Absolute					2022-01-19
ASD009069	CM1166005-871	116600513		2526.42 Square Meter	SOUTHFIELD ALSO KNOWN AS SEAVIEW	St. Elizabeth		Seaview District, St. Elizabeth	Private	- Asshur Buchanan Carpenter of Savannah, Palmers Cross P.A Clarendon Jamaica	Possession			Absolute					2022-01-19
ASD009103	CM1166005-871	116600514		769.08 Square Meter	SOUTHFIELD ALSO KNOWN AS SEAVIEW	St. Elizabeth		Seaview District, St. Elizabeth	Private	- Delroy Denton Contractor of 1 1/2 Windsor Road, Kingston 2 St. Andrew Jamaica	Possession			Absolute					2022-01-19
ASD009042	CM1166005-871	116600515		2257.22 Square Meter	SOUTHFIELD ALSO KNOWN AS SEAVIEW	St. Elizabeth		Seaview District, St. Elizabeth	Private	- Mark Ricardo Lewin Farmer of Seaview District, Southfield P.O. St. Elizabeth Jamaica - Jusann Lewin Domestic Worker of 3434 Foxcroft Rd, Apt 202 Miramar Florida 33020 United States	Possession			Absolute					2022-01-19
ASD009094	CM1166005-871	116600516		1220.72 Square Meter	SOUTHFIELD ALSO KNOWN AS SEAVIEW	St. Elizabeth		Seaview District, St. Elizabeth	Private	- Neville Anthony Turner Landscaper of Seaview District, Southfield P.O. St. Elizabeth Jamaica	Possession			Absolute					2022-01-19
ASD009367	CM1166005-871	116600517		4668.65 Square Meter	SOUTHFIELD ALSO KNOWN AS SEAVIEW	St. Elizabeth		Seaview District, St. Elizabeth	Private	- Viviene Verinica Falconer Nurse of 4036 Harper Ave, Bronx New York 10466 United States	Gift			Absolute					2022-01-19
ASD009054	CM1166005-871	116600518		2352.24 Square Meter	SOUTHFIELD ALSO KNOWN AS SEAVIEW	St. Elizabeth		Seaview District, St. Elizabeth	Private	- Winford McDonald Williams Farmer of Southfield District, Southfield P.O. St. Elizabeth Jamaica	Possession			Qualified					2022-01-19



ADJUDICATION RECORD
PURSUANT TO SECTION 8A (1) (e) and 8A (1) (g) OF THE
REGISTRATION OF TITLES CADASTRAL MAPPING AND TENURE CLARIFICATION (SPECIAL PROVISIONS) ACT

SYSTEMATIC ADJUDICATION AREA : PART OF SOUTHFIELD, ST. ELIZABETH (PART 2)

APPLICATION NO.	LAND INFORMATION								PERSONAL DETAILS			OCCUPANCY DETAILS							
	CADASTRAL MAP NUMBER	CADASTRAL MAP PARCEL NUMBER	LAND VALUATION NUMBER	AREA	PLACE	PARISH	VOLUME/FOLIO	PROPERTY ADDRESS	NATURE OF PARCEL	OWNER(S) DETAILS	NATURE BY WHICH LAND WAS ACQUIRED	NATURE OF OWNER DISABILITY	NAME, ADDRESS AND OCCUPATION OF GUARDIAN	NATURE OF TITLE	DETAILS OF ENCUMBRANCES	RESTRICTIONS ON POWER TO DEAL WITH LAND	DETAILS OF PERSON ENTITLED TO BENEFIT OF RESTRICTION	DOCUMENTS PRESENTED	DATE OF COMPLETION OF APPLICATION FORM
ASD009304	CM1166005-871	116600519		5079.11 Square Meter	SOUTHFIELD ALSO KNOWN AS SEAVIEW	St. Elizabeth		Seaview District, St. Elizabeth	Private	- Clarande Rosetta Parchment Businesswoman of Seaview District, Southfield P.O St. Elizabeth Jamaica	Possession			Absolute					2022-01-19
ASD010839	CM1166004-868	116600423 save and except the portion of land registered at Vol.1477 FoI.443 containing by survey 1456.13 square meters		66.02 Square Meter	SOUTHFIELD ALSO KNOWN AS SEAVIEW	St. Elizabeth		Seaview District, St. Elizabeth	Crown	- Commissioner of Lands of 20 North Street Kingston Jamaica	Special Provisions Act			Absolute					2022-06-23

The Adjudication Record was displayed in the Systematic Adjudication Area on July 4, 2022 and shall remain on display for a period of THIRTY (30) days.

During this period, the Senior Director, Adjudication Services may amend any minor error or omission not materially affecting the interest of any person. Therefore, any Applicant who considers the Adjudication Record to be contain minor inaccuracies or omissions, may within THIRTY (30) days of the date of display of the Adjudication Record, submit the details of such inaccuracies or omissions in the prescribed Form and manner.

Any person who objects to an Applicant's claim to ownership rights and interests in a parcel of land on the Adjudication Record, may within THIRTY (30) days of the date of display of the said Record submit the grounds for objection in the prescribed Form and manner.

The prescribed Forms (Amendment of the Adjudication Record or Objection to the Adjudication Record) are available at any National Land Agency office or via the Agencies website at: www.nla.gov.jm

All Requests for Amendment of the Adjudication Record or Objection to the Adjudication Record must be submitted using the prescribed Form to the Senior Director, Adjudication Services at:

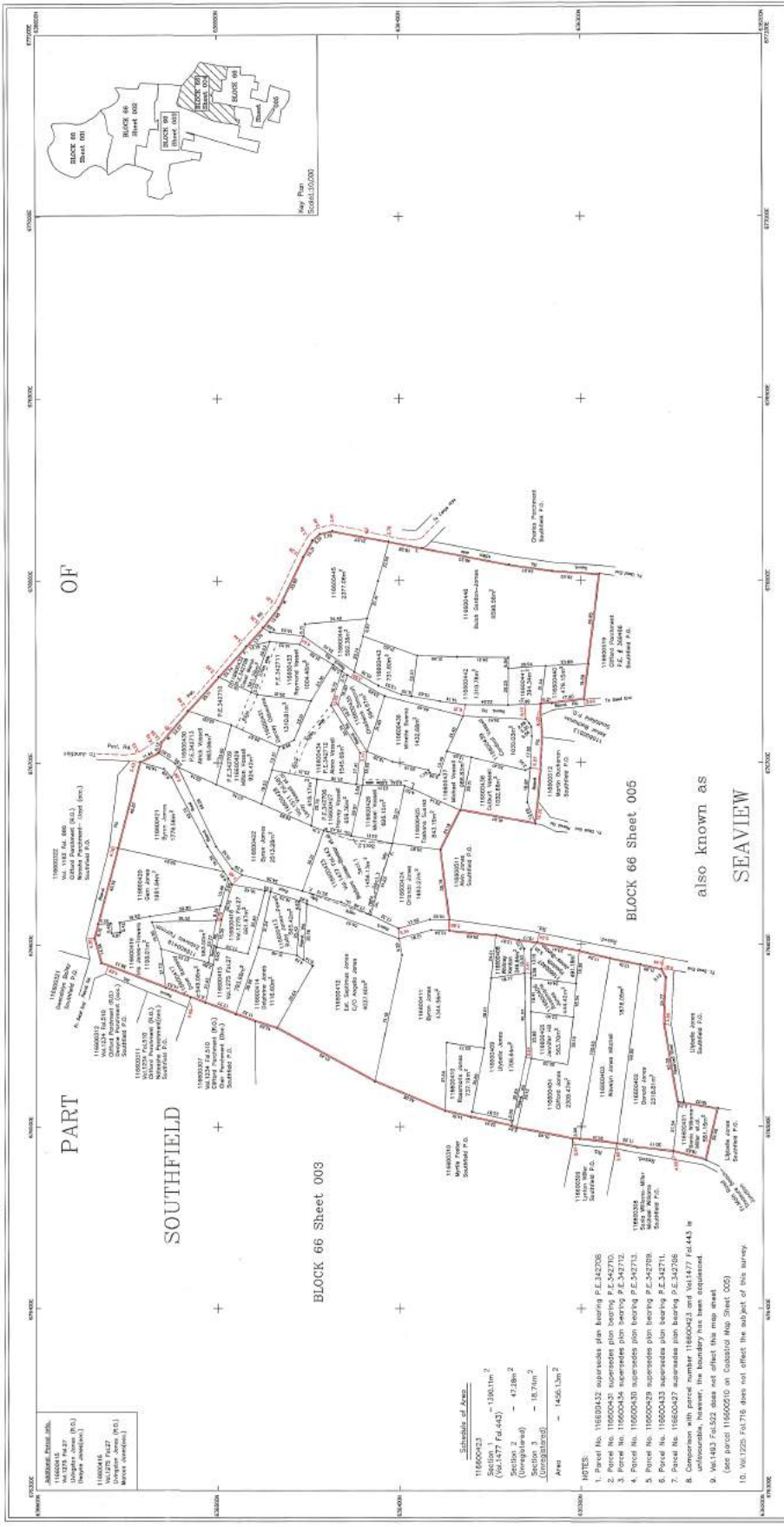
National Land Agency
8 Ardenne Road
Kingston 10
Saint Andrew

This Record comprises applications for lands located within Southfield, St. Elizabeth (Part 2) and more particularly, being Cadastral Map Numbers:

1. CM1166004-868
2. CM1166005-871

Display Date: July 4, 2022

Senior Director,
Adjudication Services



Schedule of Area

Section 1	130.11m ²
Section 2	47.28m ²
Section 3	18.71m ²
Section 4	14.56, 1.3m ²

NOTES:

1. Parcel No. 116000432 supersedes plan bearing P.E.342708
2. Parcel No. 116000431 supersedes plan bearing P.E.342710
3. Parcel No. 116000434 supersedes plan bearing P.E.342712
4. Parcel No. 116000030 supersedes plan bearing P.E.342713
5. Parcel No. 116000029 supersedes plan bearing P.E.342709
6. Parcel No. 116000433 supersedes plan bearing P.E.342711
7. Parcel No. 116000427 supersedes plan bearing P.E.342706
8. Unconformable in part between parcels 11601477 (4443) & 116000427
9. Via 1483 Fal-S21 does not affect this map sheet
10. Via 1225 Fal-716 does not affect the subject of this survey.

LEGEND

- Value of Plot: 10,010 10.20
- Property Boundary: Dashed line
- Occupied Plot Boundary: Solid line
- Approved Boundary: Dotted line
- Land Location Reference Number: 2202020

There are no objections to the survey.
 Matters were stated on all adjoining owners and an evidence upon request.
 Date of this map: 15/12/2020
 Date of the last: 15/12/2020
 Date of the map: 15/12/2020

Block	Sheet	Area
Block 66	Sheet 004	130.11m ²
Block 66	Sheet 003	47.28m ²
Block 66	Sheet 002	18.71m ²
Block 66	Sheet 001	14.56, 1.3m ²

PROF. COUNT DATA

No. of Contiguous Plots	1
No. of Plots	14
Total No. of Plots	14

EXAMPLES OF PLOT NUMBERING

Block	66
Sheet	004
Plot No.	116000431

COVERED BY GEOLAND LIMITED AND THEL BLOK SURVEYING COMPANY LIMITED SURVEYORS

DATE: 15/12/2020

GEOLAND

PREPARED BY: M. J. LAFITE
 52-60 CHINA CREST
 KINGSTON 5
 JAMAICA, W.I.
 TEL: 876988-0192

SOUTHFIELD SEAWIEW

ST. EDMUND

Via 1511 Fal-581, Via 1477 Fal-443, Via 1275 Fal-27 and Unregistered lands

SURVEY DATUM JAD2001

Project: Land Parcel Demarcation with
 2001 Measurements
 77.5% of 2001
 22.5% of 2001
 1:200

MAP CHECKED

For Director of Surveys

Date: 15/12/2020

LEGEND

Value of Plot: 10,010 10.20

Property Boundary: Dashed line

Occupied Plot Boundary: Solid line

Approved Boundary: Dotted line

Land Location Reference Number: 2202020

There are no objections to the survey.
 Matters were stated on all adjoining owners and an evidence upon request.
 Date of this map: 15/12/2020
 Date of the last: 15/12/2020
 Date of the map: 15/12/2020

Block	Sheet	Area
Block 66	Sheet 004	130.11m ²
Block 66	Sheet 003	47.28m ²
Block 66	Sheet 002	18.71m ²
Block 66	Sheet 001	14.56, 1.3m ²

PROF. COUNT DATA

No. of Contiguous Plots	1
No. of Plots	14
Total No. of Plots	14

EXAMPLES OF PLOT NUMBERING

Block	66
Sheet	004
Plot No.	116000431

COVERED BY GEOLAND LIMITED AND THEL BLOK SURVEYING COMPANY LIMITED SURVEYORS

DATE: 15/12/2020

GEOLAND

PREPARED BY: M. J. LAFITE
 52-60 CHINA CREST
 KINGSTON 5
 JAMAICA, W.I.
 TEL: 876988-0192

SOUTHFIELD SEAWIEW

ST. EDMUND

Via 1511 Fal-581, Via 1477 Fal-443, Via 1275 Fal-27 and Unregistered lands

SURVEY DATUM JAD2001

Project: Land Parcel Demarcation with
 2001 Measurements
 77.5% of 2001
 22.5% of 2001
 1:200

MAP CHECKED

For Director of Surveys

Date: 15/12/2020

Block	Sheet	Area
Block 66	Sheet 004	130.11m ²
Block 66	Sheet 003	47.28m ²
Block 66	Sheet 002	18.71m ²
Block 66	Sheet 001	14.56, 1.3m ²

PROF. COUNT DATA

No. of Contiguous Plots	1
No. of Plots	14
Total No. of Plots	14

EXAMPLES OF PLOT NUMBERING

Block	66
Sheet	004
Plot No.	116000431

COVERED BY GEOLAND LIMITED AND THEL BLOK SURVEYING COMPANY LIMITED SURVEYORS

DATE: 15/12/2020

GEOLAND

PREPARED BY: M. J. LAFITE
 52-60 CHINA CREST
 KINGSTON 5
 JAMAICA, W.I.
 TEL: 876988-0192

SOUTHFIELD SEAWIEW

ST. EDMUND

Via 1511 Fal-581, Via 1477 Fal-443, Via 1275 Fal-27 and Unregistered lands

SURVEY DATUM JAD2001

Project: Land Parcel Demarcation with
 2001 Measurements
 77.5% of 2001
 22.5% of 2001
 1:200

MAP CHECKED

For Director of Surveys

Date: 15/12/2020

Block	Sheet	Area
Block 66	Sheet 004	130.11m ²
Block 66	Sheet 003	47.28m ²
Block 66	Sheet 002	18.71m ²
Block 66	Sheet 001	14.56, 1.3m ²

PROF. COUNT DATA

No. of Contiguous Plots	1
No. of Plots	14
Total No. of Plots	14

EXAMPLES OF PLOT NUMBERING

Block	66
Sheet	004
Plot No.	116000431

COVERED BY GEOLAND LIMITED AND THEL BLOK SURVEYING COMPANY LIMITED SURVEYORS

DATE: 15/12/2020

GEOLAND

PREPARED BY: M. J. LAFITE
 52-60 CHINA CREST
 KINGSTON 5
 JAMAICA, W.I.
 TEL: 876988-0192

SOUTHFIELD SEAWIEW

ST. EDMUND

Via 1511 Fal-581, Via 1477 Fal-443, Via 1275 Fal-27 and Unregistered lands

SURVEY DATUM JAD2001

Project: Land Parcel Demarcation with
 2001 Measurements
 77.5% of 2001
 22.5% of 2001
 1:200

MAP CHECKED

For Director of Surveys

Date: 15/12/2020

Block	Sheet	Area
Block 66	Sheet 004	130.11m ²
Block 66	Sheet 003	47.28m ²
Block 66	Sheet 002	18.71m ²
Block 66	Sheet 001	14.56, 1.3m ²

PROF. COUNT DATA

No. of Contiguous Plots	1
No. of Plots	14
Total No. of Plots	14

EXAMPLES OF PLOT NUMBERING

Block	66
Sheet	004
Plot No.	116000431

COVERED BY GEOLAND LIMITED AND THEL BLOK SURVEYING COMPANY LIMITED SURVEYORS

DATE: 15/12/2020

GEOLAND

PREPARED BY: M. J. LAFITE
 52-60 CHINA CREST
 KINGSTON 5
 JAMAICA, W.I.
 TEL: 876988-0192

SOUTHFIELD SEAWIEW

ST. EDMUND

Via 1511 Fal-581, Via 1477 Fal-443, Via 1275 Fal-27 and Unregistered lands

SURVEY DATUM JAD2001

Project: Land Parcel Demarcation with
 2001 Measurements
 77.5% of 2001
 22.5% of 2001
 1:200

MAP CHECKED

For Director of Surveys

Date: 15/12/2020

Block	Sheet	Area
Block 66	Sheet 004	130.11m ²
Block 66	Sheet 003	47.28m ²
Block 66	Sheet 002	18.71m ²
Block 66	Sheet 001	14.56, 1.3m ²

PROF. COUNT DATA

No. of Contiguous Plots	1
No. of Plots	14
Total No. of Plots	14

EXAMPLES OF PLOT NUMBERING

Block	66
Sheet	004
Plot No.	116000431

COVERED BY GEOLAND LIMITED AND THEL BLOK SURVEYING COMPANY LIMITED SURVEYORS

DATE: 15/12/2020

GEOLAND

PREPARED BY: M. J. LAFITE
 52-60 CHINA CREST
 KINGSTON 5
 JAMAICA, W.I.
 TEL: 876988-0192

SOUTHFIELD SEAWIEW

ST. EDMUND

Via 1511 Fal-581, Via 1477 Fal-443, Via 1275 Fal-27 and Unregistered lands

SURVEY DATUM JAD2001

Project: Land Parcel Demarcation with
 2001 Measurements
 77.5% of 2001
 22.5% of 2001
 1:200

MAP CHECKED

For Director of Surveys

Date: 15/12/2020

Block	Sheet	Area
Block 66	Sheet 004	130.11m ²
Block 66	Sheet 003	47.28m ²
Block 66	Sheet 002	18.71m ²
Block 66	Sheet 001	14.56, 1.3m ²

PROF. COUNT DATA

No. of Contiguous Plots	1
No. of Plots	14
Total No. of Plots	14

EXAMPLES OF PLOT NUMBERING

Block	66
Sheet	004
Plot No.	116000431

COVERED BY GEOLAND LIMITED AND THEL BLOK SURVEYING COMPANY LIMITED SURVEYORS

DATE: 15/12/2020

GEOLAND

PREPARED BY: M. J. LAFITE
 52-60 CHINA CREST
 KINGSTON 5
 JAMAICA, W.I.
 TEL: 876988-0192

SOUTHFIELD SEAWIEW

ST. EDMUND

Via 1511 Fal-581, Via 1477 Fal-443, Via 1275 Fal-27 and Unregistered lands

SURVEY DATUM JAD2001

Project: Land Parcel Demarcation with
 2001 Measurements
 77.5% of 2001
 22.5% of 2001
 1:200

MAP CHECKED

For Director of Surveys

Date: 15/12/2020

Block	Sheet	Area
Block 66	Sheet 004	130.11m ²
Block 66	Sheet 003	47.28m ²
Block 66	Sheet 002	18.71m ²
Block 66	Sheet 001	14.56, 1.3m ²

PROF. COUNT DATA

No. of Contiguous Plots	1
No. of Plots	14
Total No. of Plots	14

EXAMPLES OF PLOT NUMBERING

Block	66
Sheet	004
Plot No.	116000431

COVERED BY GEOLAND LIMITED AND THEL BLOK SURVEYING COMPANY LIMITED SURVEYORS

DATE: 15/12/2020

GEOLAND

PREPARED BY: M. J. LAFITE
 52-60 CHINA CREST
 KINGSTON 5
 JAMAICA, W.I.
 TEL: 876988-0192

SOUTHFIELD SEAWIEW

ST. EDMUND

Via 1511 Fal-581, Via 1477 Fal-443, Via 1275 Fal-27 and Unregistered lands

SURVEY DATUM JAD2001

Project: Land Parcel Demarcation with
 2001 Measurements
 77.5% of 2001
 22.5% of 2001
 1:200

MAP CHECKED

For Director of Surveys

Date: 15/12/2020

Block	Sheet	Area
Block 66	Sheet 004	130.11m ²
Block 66	Sheet 003	47.28m ²
Block 66	Sheet 002	18.71m ²
Block 66	Sheet 001	14.56, 1.3m ²

PROF. COUNT DATA

No. of Contiguous Plots	1
No. of Plots	14
Total No. of Plots	14

EXAMPLES OF PLOT NUMBERING

Block	66
Sheet	004
Plot No.	116000431

COVERED BY GEOLAND LIMITED AND THEL BLOK SURVEYING COMPANY LIMITED SURVEYORS

DATE: 15/12/2020

GEOLAND

PREPARED BY: M. J. LAFITE
 52-60 CHINA CREST
 KINGSTON 5
 JAMAICA, W.I.
 TEL: 876988-0192

SOUTHFIELD SEAWIEW

ST. EDMUND

Via 1511 Fal-581, Via 1477 Fal-443, Via 1275 Fal-27 and Unregistered lands

SURVEY DATUM JAD2001

Project: Land Parcel Demarcation with
 2001 Measurements
 77.5% of 2001
 22.5% of 2001
 1:200

MAP CHECKED

For Director of Surveys

Date: 15/12/2020

Block	Sheet	Area
Block 66	Sheet 004	130.11m ²
Block 66	Sheet 003	47.28m ²
Block 66	Sheet 002	18.71m ²
Block 66	Sheet 001	14.56, 1.3m ²

PROF. COUNT DATA

No. of Contiguous Plots	1
No. of Plots	14
Total No. of Plots	14

EXAMPLES OF PLOT NUMBERING

Block	66
Sheet	004
Plot No.	116000431

COVERED BY GEOLAND LIMITED AND THEL BLOK SURVEYING COMPANY LIMITED SURVEYORS

DATE: 15/12/2020

GEOLAND

PREPARED BY: M. J. LAFITE
 52-60 CHINA CREST
 KINGSTON 5
 JAMAICA, W.I.
 TEL: 876988-0192

SOUTHFIELD SEAWIEW

ST. EDMUND

Via 1511 Fal-581, Via 1477 Fal-443, Via 1275 Fal-27 and Unregistered lands

SURVEY DATUM JAD2001

Project: Land Parcel Demarcation with
 2001 Measurements
 77.5% of 2001
 22.5% of 2001
 1:200

MAP CHECKED

For Director of Surveys

Date: 15/12/2020

Block	Sheet	Area
Block 66	Sheet 004	130.11m ²
Block 66	Sheet 003	47.28m ²
Block 66	Sheet 002	18.71m ²
Block 66	Sheet 001	14.56, 1.3m ²

PROF. COUNT DATA

No. of Contiguous Plots	1
No. of Plots	14
Total No. of Plots	14

EXAMPLES OF PLOT NUMBERING

Block	66
Sheet	004
Plot No.	116000431

COVERED BY GEOLAND LIMITED AND THEL BLOK SURVEYING COMPANY LIMITED SURVEYORS

DATE: 15/12/2020

GEOLAND

