



ADJUDICATION RECORD
 PURSUANT TO SECTION 8A (1) (a) and 8A (1) (b) OF THE
 REGISTRATION OF TITLES CADASTRAL MAPPING AND TENURE CLARIFICATION (SPECIAL PROVISIONS) ACT

SYSTEMATIC ADJUDICATION AREA : PART OF SOUTHFIELD, ST. ELIZABETH (PART 1)

APPLICATION NO.	LAND INFORMATION									PERSONAL DETAILS		OCCUPANCY DETAILS							
	CADASTRAL MAP NUMBER	CADASTRAL MAP PARCEL NUMBER	LAND VALUATION NUMBER	AREA	PLACE	PARISH	VOLUME/FOLIO	PROPERTY ADDRESS	NATURE OF PARCEL	OWNER(S) DETAILS	NATURE BY WHICH LAND WAS ACQUIRED	NATURE OF OWNER DISBAILITY	NAME, ADDRESS AND OCCUPATION OF GUARDIAN	NATURE OF TITLE	DETAILS OF ENCUMBRANCES	RESTRICTIONS ON POWER TO DEAL WITH LAND	DETAILS OF PERSON ENTITLED TO BENEFIT OF RESTRICTION	DOCUMENTS PRESENTED	DATE OF COMPLETION OF APPLICATION FORM
ASD009204	CM1166002-857	116600203		1.0147 Hectare	SOUTHFIELD ALSO KNOWN AS SEAVIEW	St. Elizabeth		Seaview District, St. Elizabeth	Private	- Nola Elonia Stephenson Businesswoman of Seaview District, Southfield P.O. St. Elizabeth Jamaica - Carol Eloise Bloomfield Retired Teacher of 40 Greenvale Road, P.O. Box 215 Mandeville Manchester Jamaica	Inheritance							- Last Will and Testament of : Ellen Robertha Foster - Grant of Administration : Ellen Robertha Foster	2022-01-19
ASD009056	CM1166002-857	116600204		875.29 Square Meter	SOUTHFIELD ALSO KNOWN AS SEAVIEW	St. Elizabeth		Seaview District, St. Elizabeth	Private	- Camal Anthonio Stephenson Minister of Religion of Seaview District, Southfield P.O. St. Elizabeth Jamaica	Gift								2022-01-19
ASD009090	CM1166002-857	116600205		1015.34 Square Meter	SOUTHFIELD ALSO KNOWN AS SEAVIEW	St. Elizabeth		Seaview District, St. Elizabeth	Private	- David Regon Clarke Farmer of Seaview District, Southfield P.O. St. Elizabeth Jamaica - Deshaun Eboni Martin-Clarke Lecturer of Seaview District, Southfield P.O. St. Elizabeth Jamaica	Possession								2022-01-19
ASD009093	CM1166002-857	116600206		4552.75 Square Meter	SOUTHFIELD ALSO KNOWN AS SEAVIEW	St. Elizabeth		Seaview District, St. Elizabeth	Private	- Trudian Alorna Vassell Cook of Seaview District, Southfield P.O. St. Elizabeth Jamaica - Wayne St. Aubyn Vassell Labourer of Seaview District, Southfield P.O. St. Elizabeth Jamaica	Possession								2022-01-19
ASD009222	CM1166002-857	116600208		751.54 Square Meter	SOUTHFIELD ALSO KNOWN AS SEAVIEW	St. Elizabeth		Seaview District, St. Elizabeth	Private	- Jacqueline Natasha Reid Child Care Provider of Seaview District, Southfield P.O. St. Elizabeth Jamaica	Gift								2022-01-19
ASD009158	CM1166002-857	116600209		554.9 Square Meter	SOUTHFIELD ALSO KNOWN AS SEAVIEW	St. Elizabeth		Seaview District, St. Elizabeth	Private	- Crystal Sommy Joe Reid Library Assistant of Seaview District, Southfield P.O. St. Elizabeth Jamaica	Gift								2022-01-19
ASD009088	CM1166002-857	116600210		894.74 Square Meter	SOUTHFIELD ALSO KNOWN AS SEAVIEW	St. Elizabeth		Seaview District, St. Elizabeth	Private	- Maxine Jocyelyn Zenover Reid Businesswoman of Seaview District, Southfield P.O. St. Elizabeth Jamaica	Possession								2022-01-19
ASD009109	CM1166002-857	116600211		692.95 Square Meter	SOUTHFIELD ALSO KNOWN AS SEAVIEW	St. Elizabeth		Seaview District, St. Elizabeth	Private	- Recardo Clarke Deputy General Manager of Seaview District, Southfield P.O. St. Elizabeth Jamaica	Possession								2022-01-19
ASD009262	CM1166002-857	116600212		1197.79 Square Meter	SOUTHFIELD ALSO KNOWN AS SEAVIEW	St. Elizabeth		Seaview District, St. Elizabeth	Private	- Rayon Dixon Farmer of Southfield District, Southfield P.O. St. Elizabeth Jamaica	Possession								2022-01-19
ASD009414	CM1166002-857	116600214		757.38 Square Meter	SOUTHFIELD ALSO KNOWN AS SEAVIEW	St. Elizabeth		Seaview District, St. Elizabeth	Private	- Berhin Louise Dixon Housewife of Red Bank District, Red Bank P.A. St. Elizabeth Jamaica	Possession	- Mental Disorder	- Monica Retired Office Attendant of Seaview District, Southfield P.O. St. Elizabeth	Qualified					2022-01-19
ASD009082	CM1166002-857	116600215		1214.99 Square Meter	SOUTHFIELD ALSO KNOWN AS SEAVIEW	St. Elizabeth		Seaview District, St. Elizabeth	Private	- Heather Nadine Lyn Brown Businesswoman of Seaview District, Southfield P.O. St. Elizabeth Jamaica	Possession								2022-01-19
ASD009170	CM1166002-857	116600216		752.19 Square Meter	SOUTHFIELD ALSO KNOWN AS SEAVIEW	St. Elizabeth		Seaview District, St. Elizabeth	Private	- Celeta Midorah Morgan Nurse Aid of 7833 Indigo Street, Miramar Florida 33023 United States	Possession								2022-01-19
ASD009273	CM1166002-857	116600217		4573.44 Square Meter	SOUTHFIELD ALSO KNOWN AS SEAVIEW	St. Elizabeth		Seaview District, St. Elizabeth	Private	- Lerline Ionie Soares Housewife of Seaview District, Southfield P.O. St. Elizabeth Jamaica - Cyphus Turner Handyman of 761 NE 180th Street, Miami Beach Florida 33162 United States - Celeta Midorah Morgan Nurse Aid of 7833 Indigo Street, Miramar Florida 33023 United States - Concita Maisie Turner Farmer of Seaview District, Southfield P.O. St. Elizabeth Jamaica	Inheritance								2022-01-19
ASD009250	CM1166002-857	116600218		566.68 Square Meter	SOUTHFIELD ALSO KNOWN AS SEAVIEW	St. Elizabeth		Seaview District, St. Elizabeth	Private	- Concita Maisie Turner Farmer of Seaview District, Southfield P.O. St. Elizabeth Jamaica	Possession								2022-01-19
ASD009092	CM1166002-857	116600219		815.5 Square Meter	SOUTHFIELD ALSO KNOWN AS SEAVIEW	St. Elizabeth		Seaview District, St. Elizabeth	Private	- Concita Maisie Turner Farmer of Seaview District, Southfield P.O. St. Elizabeth Jamaica	Possession								2022-01-19



ADJUDICATION RECORD
PURSUANT TO SECTION 8A (1) (a) and 8A (1) (b) OF THE
REGISTRATION OF TITLES CADASTRAL MAPPING AND TENURE CLARIFICATION (SPECIAL PROVISIONS) ACT

SYSTEMATIC ADJUDICATION AREA : PART OF SOUTHFIELD, ST. ELIZABETH (PART 1)

APPLICATION NO.	LAND INFORMATION									PERSONAL DETAILS		OCCUPANCY DETAILS							
	CADASTRAL MAP NUMBER	CADASTRAL MAP PARCEL NUMBER	LAND VALUATION NUMBER	AREA	PLACE	PARISH	VOLUME/FOLIO	PROPERTY ADDRESS	NATURE OF PARCEL	OWNER(S) DETAILS	NATURE BY WHICH LAND WAS ACQUIRED	NATURE OF OWNER DISBAILITY	NAME, ADDRESS AND OCCUPATION OF GUARDIAN	NATURE OF TITLE	DETAILS OF ENCUMBRANCES	RESTRICTIONS ON POWER TO DEAL WITH LAND	DETAILS OF PERSON ENTITLED TO BENEFIT OF RESTRICTION	DOCUMENTS PRESENTED	DATE OF COMPLETION OF APPLICATION FORM
ASD009268	CM1166002-857	116600220		1282.11 Square Meter	SOUTHFIELD ALSO KNOWN AS SEAVIEW	St. Elizabeth		Seaview District, St Elizabeth	Crown	- Commissioner of Lands of 20 North Street Kingston Jamaica	Special Provisions Act			Absolute					2022-01-19
ASD010654	CM1166002-857	116600222		1976.58 Square Meter	SOUTHFIELD ALSO KNOWN AS SEAVIEW	St. Elizabeth	Partially unregistered (Section 1- 1930.06 sq.m) and partially registered at Volume 1105 Folio 113 (Section 2- 46.52 sq.m)	Seaview district, St Elizabeth P.O	Private	- Medean Medora Jones Farmer of 6809 NW 76TH CT, Tamarac Florida 33321 United States - Roselin Jones Retired farmer of Seaview District Southfield P.O St Elizabeth Jamaica	Possession			Absolute					2022-05-26
ASD009245	CM1166002-857	116600223		168.69 Square Meter	SOUTHFIELD ALSO KNOWN AS SEAVIEW	St. Elizabeth		Seaview District, St. Elizabeth	Private	- Mellissa Murray Campbell Businesswoman of 20 Lynmar Drive, Mandeville P.O Manchester Jamaica	Possession			Absolute					2022-01-19
ASD009096	CM1166002-857	116600224		758.34 Square Meter	SOUTHFIELD ALSO KNOWN AS SEAVIEW	St. Elizabeth	Partially unregistered (Section 1- 682.43sq.m) and partially registered at Volume 1105 Folio 113 (Section 2- 75.90 sq.m)	Seaview District, St Elizabeth	Private	- Gaychia Simone Williams Dentist Assistant of Seaview District, Southfield P.O St. Elizabeth Jamaica	Possession			Absolute					2022-01-19
ASD009147	CM1166002-857	116600225		835.45 Square Meter	SOUTHFIELD ALSO KNOWN AS SEAVIEW	St. Elizabeth	Partially unregistered (Section 1- 829.12sq.m) and partially registered at Volume 1105 Folio 113 (Section 2- 6.34 sq.m)	Seaview District, St Elizabeth	Private	- Everton Allen Jones Retired Chef of Seaview District, Southfield P.O St. Elizabeth Jamaica	Possession			Absolute					2022-01-19
ASD009145	CM1166002-857	116600226		906.9 Square Meter	SOUTHFIELD ALSO KNOWN AS SEAVIEW	St. Elizabeth		Seaview District, St Elizabeth	Private	- Errol Lee Jones Farmer of Dunder Hill, Junction P.O St. Elizabeth Jamaica	Gift			Absolute					2022-01-19
ASD009112	CM1166002-857	116600227		583.48 Square Meter	SOUTHFIELD ALSO KNOWN AS SEAVIEW	St. Elizabeth		Seaview District, St Elizabeth	Crown	- Commissioner of Lands of 20 North Street Kingston Jamaica	Special Provisions Act			Absolute					2022-01-19
ASD009154	CM1166002-857	116600228		1084.68 Square Meter	SOUTHFIELD ALSO KNOWN AS SEAVIEW	St. Elizabeth	Partially unregistered (Section 1- 1004.56 sq.m) and partially registered at Volume 1105 Folio 113 (Section 2- 80.13 sq.m)	Seaview District, St Elizabeth	Private	- Cyphus Turner Handyman of 761 NE 180th Street, Miami Beach Florida 33162 United States - Rosilee Turner Home Health Aid of 761 NE 180th St Miami Beach Florida 33162 United States	Possession			Absolute					2022-01-19
ASD009086	CM1166002-857	116600229		967.68 Square Meter	SOUTHFIELD ALSO KNOWN AS SEAVIEW	St. Elizabeth	Partially unregistered (Section 1- 935.67 sq.m) and partially registered at Volume 1105 Folio 113 (Section 2- 32.01 sq.m)	Seaview District, St Elizabeth	Private	- Lerline Ionie Soares Housewife of Seaview District, Southfield P.O St. Elizabeth Jamaica	Possession			Absolute					2022-01-19
ASD009142	CM1166002-857	116600230		617.5 Square Meter	SOUTHFIELD ALSO KNOWN AS SEAVIEW	St. Elizabeth		Seaview District, St Elizabeth	Crown	- Commissioner of Lands of 20 North Street Kingston Jamaica	Special Provisions Act			Absolute					2022-01-19
ASD009162	CM1166002-857	116600231		327.5 Square Meter	SOUTHFIELD ALSO KNOWN AS SEAVIEW	St. Elizabeth		Seaview District, St Elizabeth P.O	Private	- Lerline Ionie Soares Housewife of Seaview District, Southfield P.O St. Elizabeth Jamaica	Possession			Absolute					2022-01-19
ASD009176	CM1166002-857	116600232		873.29 Square Meter	SOUTHFIELD ALSO KNOWN AS SEAVIEW	St. Elizabeth		Seaview District, St Elizabeth	Private	- Althea Tracyon Turner Nurse's Aide of 2614 NW 60th Way Sunrise Florida 33313 United States	Possession			Absolute					2022-01-19
ASD009319	CM1166002-857	116600233		4188.15 Square Meter	SOUTHFIELD ALSO KNOWN AS SEAVIEW	St. Elizabeth		Seaview District, St. Elizabeth	Private	- Wendy Sue Porteous-Williams of Red Bank District, Red Bank P.A. St. Elizabeth Jamaica	Possession			Absolute					2022-01-19
ASD009060	CM1166002-857	116600234		1007.41 Square Meter	SOUTHFIELD ALSO KNOWN AS SEAVIEW	St. Elizabeth		Seaview District, St. Elizabeth	Private	- Dennis Gordon Labourer of Seaview District, Southfield P.O. St. Elizabeth Jamaica - Austin Cornwall Labourer of Seaview District, Southfield P.O. St. Elizabeth Jamaica	Possession			Qualified					2022-01-19
ASD009442	CM1166002-857	116600235		720.19 Square Meter	SOUTHFIELD ALSO KNOWN AS SEAVIEW	St. Elizabeth		Seaview District, St. Elizabeth	Crown	- Commissioner of Lands of 20 North Street Kingston Jamaica	Special Provisions Act			Absolute					2022-01-19
ASD010656	CM1166002-857	116600237		1154.76 Square Meter	SOUTHFIELD ALSO KNOWN AS SEAVIEW	St. Elizabeth		Seaview District, St Elizabeth	Private	- Derrick Roy Bent Farmer of Seaview District, Southfield St. Elizabeth Jamaica	Possession			Absolute					2022-05-26



ADJUDICATION RECORD
 PURSUANT TO SECTION 8A (1) (a) and 8A (1) (g) OF THE
 REGISTRATION OF TITLES CADASTRAL MAPPING AND TENURE CLARIFICATION (SPECIAL PROVISIONS) ACT

SYSTEMATIC ADJUDICATION AREA : PART OF SOUTHFIELD, ST. ELIZABETH (PART 1)

APPLICATION NO.	LAND INFORMATION									PERSONAL DETAILS		OCCUPANCY DETAILS								
	CADASTRAL MAP NUMBER	CADASTRAL MAP PARCEL NUMBER	LAND VALUATION NUMBER	AREA	PLACE	PARISH	VOLUME/FOLIO	PROPERTY ADDRESS	NATURE OF PARCEL	OWNER(S) DETAILS	NATURE BY WHICH LAND WAS ACQUIRED	NATURE OF OWNER DISBAILITY	NAME, ADDRESS AND OCCUPATION OF GUARDIAN	NATURE OF TITLE	DETAILS OF ENCUMBRANCES	RESTRICTIONS ON POWER TO DEAL WITH LAND	DETAILS OF PERSON ENTITLED TO BENEFIT OF RESTRICTION	DOCUMENTS PRESENTED	DATE OF COMPLETION OF APPLICATION FORM	
ASD009178	CM1166002-857	116600240		1377.2 Square Meter	SOUTHFIELD ALSO KNOWN AS SEAVIEW	St. Elizabeth		Seaview District, St. Elizabeth	Private	- Gem Jones Assembly Worker of 56 Lindylou Rd, North York Ontario M9M 2B2 Canada	Possession			Absolute					2022-01-19	
ASD009366	CM1166002-857	116600241		1920.87 Square Meter	SOUTHFIELD ALSO KNOWN AS SEAVIEW	St. Elizabeth		Seaview District, St. Elizabeth	Crown	Commissioner of Lands of 20 North Street Kingston Jamaica	Special Provisions Act			Absolute					2022-01-19	
ASD009149	CM1166002-857	116600243		774.3 Square Meter	SOUTHFIELD ALSO KNOWN AS SEAVIEW	St. Elizabeth		Seaview District, St. Elizabeth	Private	- Douglas Washington Bromfield Farmer of 13 Seaview District, Southfield P.O. St. Elizabeth Jamaica	Possession			Absolute					2022-01-19	
ASD009266	CM1166002-857	116600245		2155.81 Square Meter	SOUTHFIELD ALSO KNOWN AS SEAVIEW	St. Elizabeth		Seaview District, St. Elizabeth	Crown	Commissioner of Lands of 20 North Street Kingston Jamaica	Special Provisions Act			Absolute					2022-01-19	
ASD009171	CM1166002-857	116600246		761.52 Square Meter	SOUTHFIELD ALSO KNOWN AS SEAVIEW	St. Elizabeth		Seaview District, St. Elizabeth	Crown	- Commissioner of Lands of 20 North Street Kingston Jamaica	Special Provisions Act			Absolute					2022-01-19	
ASD009460	CM1166003-858	116600301		4.0787 Hectare	SOUTHFIELD ALSO KNOWN AS SEAVIEW	St. Elizabeth		Seaview District, St. Elizabeth	Private	- Corlett Alfreda Deloris Jones Farmer of Seaview District, Southfield P.O. St. Elizabeth Jamaica - Irvin Samuel Jones Retired Farmer of Seaview District, Southfield P.O. St. Elizabeth Jamaica - Patricia Elona Jones Retired Farmer of Seaview District, Southfield P.O. St. Elizabeth Jamaica - Cecil Jones Bus Driver of 116-52 167th St, Jamaica New York 11434 United States - Marcia Merron Holness Health Aide of 116-52 167th St, Jamaica New York 11434 United States - Mertelyn Ruyan Jones Cleaner of 229 Jennifer Drive GT, P.O Box 276 GT Grand Cayman KY1-1104 Cayman Islands	Possession			Absolute						2022-01-19
ASD009571	CM1166003-858	116600302		1.0137 Hectare	SOUTHFIELD ALSO KNOWN AS SEAVIEW	St. Elizabeth		Seaview District, St. Elizabeth	Private	- Carol Eloise Bloomfield Retired Teacher of 40 Greenvale Road, P.O. Box 215 Mandeville Manchester Jamaica	Inheritance			Absolute					2022-03-23	
ASD010638	CM1166003-858	116600303		8101.13 Square Meter	SOUTHFIELD ALSO KNOWN AS SEAVIEW	St. Elizabeth		Seaview District, St. Elizabeth	Private	- Carol Eloise Bloomfield Retired Teacher of 40 Greenvale Road, P.O. Box 215 Mandeville Manchester Jamaica	Inheritance			Absolute				- Grant of Administration : Grant of Probate	2022-05-25	
ASD010639	CM1166003-858	116600304		9549.23 Square Meter	SOUTHFIELD ALSO KNOWN AS SEAVIEW	St. Elizabeth		Seaview District, St. Elizabeth	Private	- Carol Eloise Bloomfield Retired Teacher of 40 Greenvale Road, P.O. Box 215 Mandeville Manchester Jamaica	Inheritance			Absolute				- Grant of Administration : Grant of Probate	2022-05-25	
ASD009087	CM1166003-858	116600308		3694.43 Square Meter	SOUTHFIELD ALSO KNOWN AS SEAVIEW	St. Elizabeth		Seaview District, St. Elizabeth	Private	- Sonia Marie Williams-Miller Farmer of Seaview District, Southfield P.O. St. Elizabeth Jamaica - Michael Williams Farmer of Seaview District, Southfield P.O. St. Elizabeth Jamaica	Purchase			Absolute					2022-01-19	
ASD009113	CM1166003-858	116600309		1416.62 Square Meter	SOUTHFIELD ALSO KNOWN AS SEAVIEW	St. Elizabeth		Seaview District, St. Elizabeth	Private	- Lynton Miller Cabinet maker of Seaview District, Southfield P.O. St. Elizabeth Jamaica	Purchase			Absolute					2022-01-19	
ASD010602	CM1166003-858	116600310		1.0398 Hectare	SOUTHFIELD ALSO KNOWN AS SEAVIEW	St. Elizabeth		Seaview District, St. Elizabeth	Private	- Curl Ione Foster Unemployed of 14 Sun Flower Close, Inverness Gardens, May Pen Clarendon Jamaica	Possession			Absolute					2022-05-24	
ASD010600	CM1166003-858	116600314		5154.51 Square Meter	SOUTHFIELD ALSO KNOWN AS SEAVIEW	St. Elizabeth		Seaview District, St. Elizabeth	Private	- Curl Ione Foster Unemployed of 14 Sun Flower Close, Inverness Gardens, May Pen Clarendon Jamaica	Possession			Absolute					2022-05-24	
ASD009157	CM1166003-858	116600315		2148.35 Square Meter	SOUTHFIELD ALSO KNOWN AS SEAVIEW	St. Elizabeth		Seaview District, St. Elizabeth	Private	- Garey Delmay Dixon Supervisor of 144 Somerset Drive, Willingboro New Jersey 08046 United States	Possession			Absolute					2022-01-19	
ASD009064	CM1166003-858	116600316		1407.32 Square Meter	SOUTHFIELD ALSO KNOWN AS SEAVIEW	St. Elizabeth		Seaview District, St. Elizabeth	Private	- Kevin Dixon Farmer of Seaview District, Southfield P.O. St. Elizabeth Jamaica	Possession			Absolute					2022-01-19	



ADJUDICATION RECORD
 PURSUANT TO SECTION 8A (1) (a) and 8A (1) (g) OF THE
 REGISTRATION OF TITLES CADASTRAL MAPPING AND TENURE CLARIFICATION (SPECIAL PROVISIONS) ACT

SYSTEMATIC ADJUDICATION AREA : PART OF SOUTHFIELD, ST. ELIZABETH (PART 1)

APPLICATION NO.	LAND INFORMATION									PERSONAL DETAILS	OCCUPANCY DETAILS								
	CADASTRAL MAP NUMBER	CADASTRAL MAP PARCEL NUMBER	LAND VALUATION NUMBER	AREA	PLACE	PARISH	VOLUME/FOLIO	PROPERTY ADDRESS	NATURE OF PARCEL	OWNER(S) DETAILS	NATURE BY WHICH LAND WAS ACQUIRED	NATURE OF OWNER DISBAILITY	NAME, ADDRESS AND OCCUPATION OF GUARDIAN	NATURE OF TITLE	DETAILS OF ENCUMBRANCES	RESTRICTIONS ON POWER TO DEAL WITH LAND	DETAILS OF PERSON ENTITLED TO BENEFIT OF RESTRICTION	DOCUMENTS PRESENTED	DATE OF COMPLETION OF APPLICATION FORM
ASD009073	CM1166003-858	116600317		965.41 Square Meter	SOUTHFIELD ALSO KNOWN AS SEAVIEW	St. Elizabeth		Seaview District, St. Elizabeth	Private	- Melbourne Delano Dixon Truck Driver of Seaview District, Southfield P.O. St. Elizabeth Jamaica	Possession			Absolute	Right of Way				2022-01-19
ASD009186	CM1166003-858	116600318		933.18 Square Meter	SOUTHFIELD ALSO KNOWN AS SEAVIEW	St. Elizabeth		Seaview District, St. Elizabeth	Private	- Carolee Dixon Coke Housekeeper of 6609 Pebble Beach Boulevard, North Lauderdale Florida 33068 United States	Possession			Absolute	Right of Way				2022-01-19
ASD009161	CM1166003-858	116600319		520.82 Square Meter	SOUTHFIELD ALSO KNOWN AS SEAVIEW	St. Elizabeth		Seaview District, St. Elizabeth	Private	- Paul Dixon Driver of 23 N Anderson St, Trenton New Jersey 08609 United States	Possession			Absolute					2022-01-19
ASD009166	CM1166003-858	116600320		398.66 Square Meter	SOUTHFIELD ALSO KNOWN AS SEAVIEW	St. Elizabeth		Seaview District, St. Elizabeth	Private	- Leon Michael Dixon Truck Driver of 7910 Hampton Boulevard, Apt. 924, North Lauderdale Florida 33068-5791 United States	Possession			Absolute					2022-01-19
ASD009089	CM1166003-858	116600321		4236.48 Square Meter	SOUTHFIELD ALSO KNOWN AS SEAVIEW	St. Elizabeth		Seaview District, St. Elizabeth	Private	- Gwendolyn Bailey Retired Nursing Assistant of 526 Cranston Ln, Ridge New York 11961 United States	Possession			Absolute					2022-01-19
ASD010653	CM1166002-857	116600221 save and except the portion of land registered at 1105/113 containing by survey 3657.35 square meters.		64.69 Square Meter	SOUTHFIELD ALSO KNOWN AS SEAVIEW	St. Elizabeth			Crown	- Commissioner of Lands of 20 North Street Kingston Jamaica	Special Provisions Act			Absolute					2022-05-26

The Adjudication Record was displayed in the Systematic Adjudication Area on June 21, 2022 and shall remain on display for a period of THIRTY (30) days.

During this period, the Senior Director, Adjudication Services may amend any minor error or omission not materially affecting the interest of any person. Therefore, any Applicant who considers the Adjudication Record to be contain minor inaccuracies or omissions, may within THIRTY (30) days of the date of display of the Adjudication Record, submit the details of such inaccuracies or omissions in the prescribed Form and manner.

Any person who objects to an Applicant's claim to ownership rights and interests in a parcel of land on the Adjudication Record, may within THIRTY (30) days of the date of display of the said Record submit the grounds for objection in the prescribed Form and manner.

The prescribed Forms (Amendment of the Adjudication Record or Objection to the Adjudication Record) are available at any National Land Agency office or via the Agencies website at: www.nla.gov.jm

All Requests for Amendment of the Adjudication Record or Objection to the Adjudication Record must be submitted using the prescribed Form to the Senior Director, Adjudication Services at:

National Land Agency
 8 Ardenne Road
 Kingston 10
 Saint Andrew

This Record comprises applications for lands located within Southfield, St. Elizabeth and more particularly, being Cadastral Map Numbers CM1166002-857 and CM1166003-858

Display Date: June 21, 2022

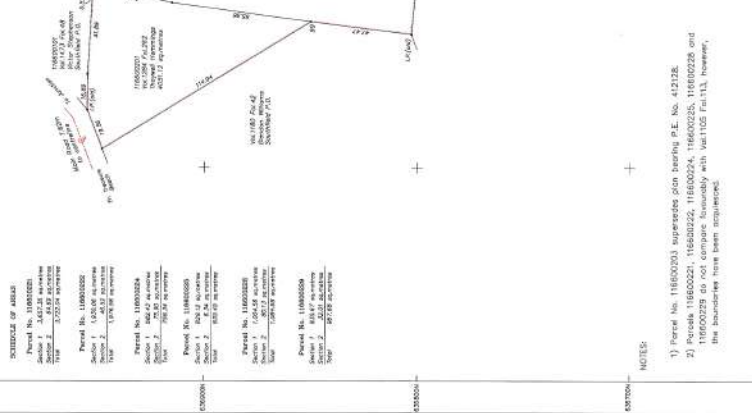
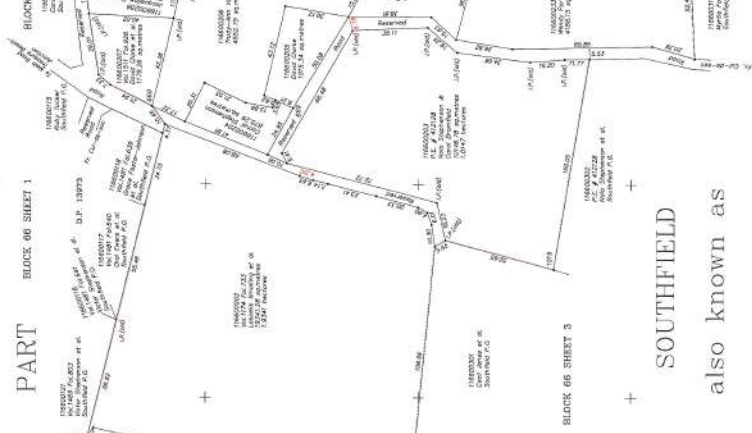
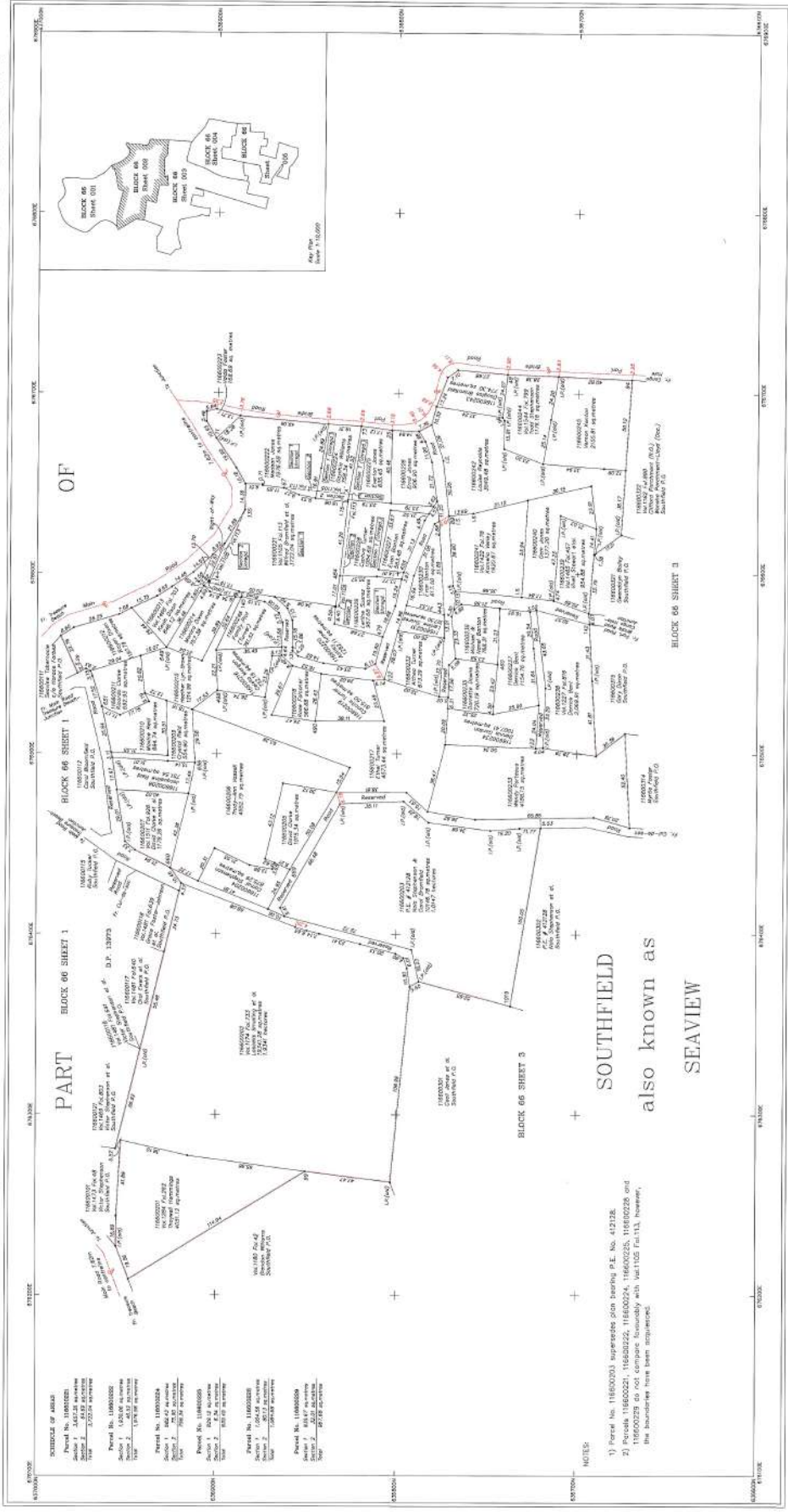
Senior Director
 Adjudication Services

L1166002

BLOCK 66 Sheet 002

JAMAICA

SCALE 1: 1000 Cadastral Map



SCHEDULE OF LOTS

Parcel No. 116600201
 Block 1 2412.00 sq metres
 Area 2 3225.74 sq metres
 Total 5637.74 sq metres

Parcel No. 116600202
 Block 1 1520.00 sq metres
 Area 2 1753.18 sq metres
 Total 3273.18 sq metres

Parcel No. 116600203
 Block 1 765.00 sq metres
 Area 2 857.50 sq metres
 Total 1622.50 sq metres

Parcel No. 116600204
 Block 1 650.00 sq metres
 Area 2 727.50 sq metres
 Total 1377.50 sq metres

Parcel No. 116600205
 Block 1 222.50 sq metres
 Area 2 250.00 sq metres
 Total 472.50 sq metres

Parcel No. 116600206
 Block 1 111.25 sq metres
 Area 2 125.00 sq metres
 Total 236.25 sq metres

Parcel No. 116600207
 Block 1 55.62 sq metres
 Area 2 62.50 sq metres
 Total 118.12 sq metres

Parcel No. 116600208
 Block 1 27.81 sq metres
 Area 2 31.25 sq metres
 Total 59.06 sq metres

SOUTHFIELD
 also known as
SEAVIEW

PART
 BLOCK 66 SHEET 1

BLOCK 66 SHEET 3

SURVEYOR:
 D. M. J. JAMES
 COMMISSIONED LAND SURVEYOR
 GEORGIAN TITLE LIMITED
 DATE:

Block Count Table

No. of Distribution Parcels	9
No. of Repetition Parcels	27
Total no. of Parcels	48

Example of parcel numbering

Parish	11	
Block	66	002
Parcel	116600201	01

Prepared by: GEORGIAN TITLE LIMITED
 52-60 CRENSHAW CRESCENT
 KINGSTON 5, JAMAICA, W.I.
 TEL: 876909-0192

Scale: 1:1000
 1cm to 10m
 GDA 83 REFERENCE: 10m

SOUTHFIELD also known as SEAVIEW
 S.M.T. ELIZABETH
 Vol. 1294 Fol. 262; Vol. 1174 Fol. 233; Vol. 1511 Fol. 825; Vol. 1490 Fol. 703;
 Vol. 1100 Fol. 113; Vol. 1227 Fol. 818; Vol. 1480 Fol. 827; Vol. 1544 Fol. 766
 Vol. 1522 Fol. 728 and (hereinafter referred to as "the said parcels")

SURVEY DATUM JAD2001
 Projection: Lambert Conformal Conic with Spheroid: Everest
 Scale: 1:1000
 Date of Measurement: 2001
 Date of Survey: 2001

LEGEND

Water and Foliage: Blue wavy lines
 Property Boundary: Dashed line
 City/Urban/Village Boundary: Dotted line
 Registered Boundary: Solid line
 Date of Survey: 16/02/2001

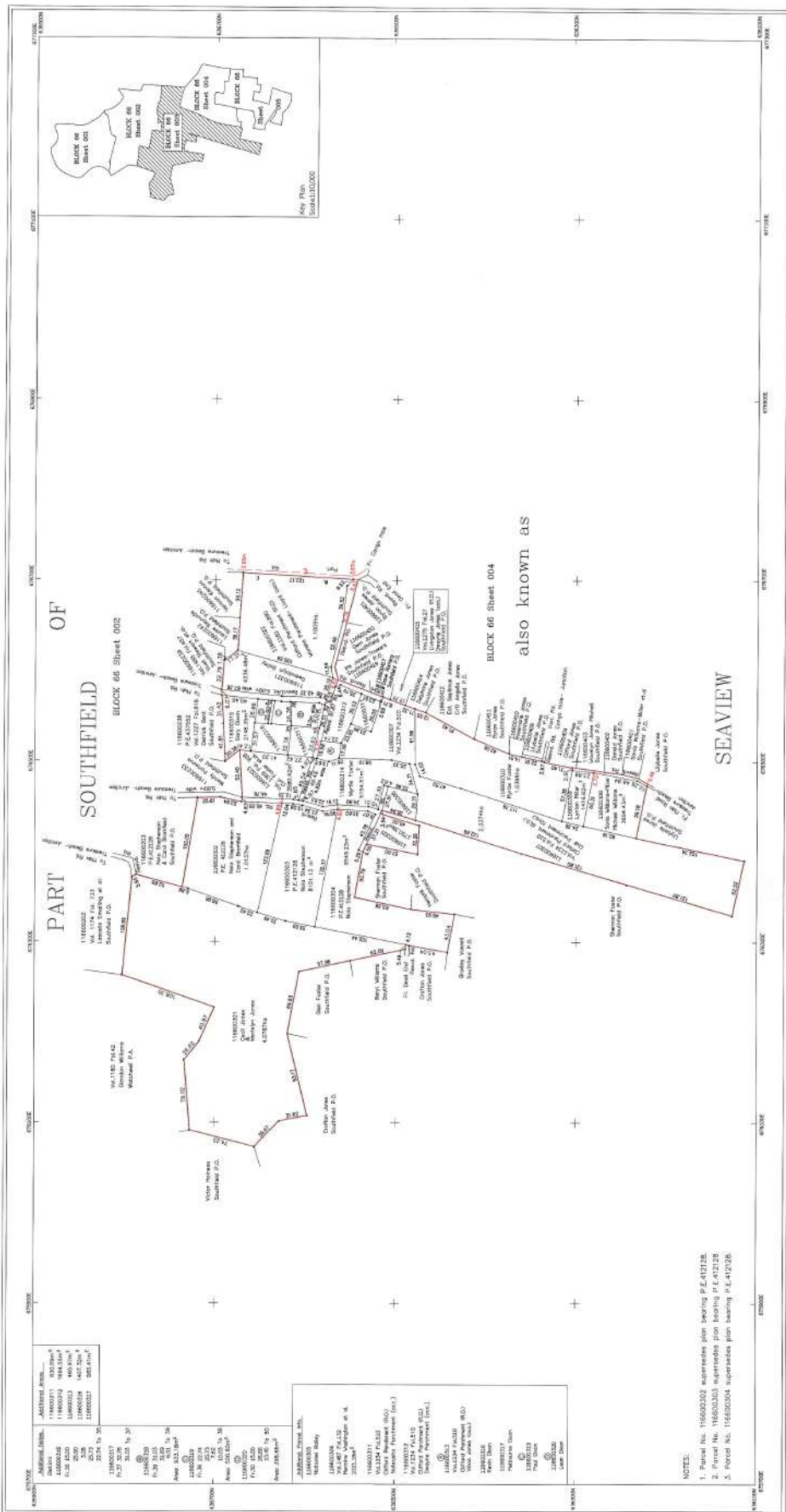
Parish	Block	Sheet	Code
St. Andrew	02	001	08
St. Andrew	02	002	09
St. Andrew	02	003	10
St. Andrew	02	004	11
St. Andrew	02	005	12
St. Andrew	02	006	13
St. Andrew	02	007	14

L1166003

SCALE 1: 2000 Cadastral Map

JAMAICA

BLOCK 66 Sheet 003



LEGEND

Survey Datum JAD2001

Surveyed by: [Signature]

Commissioned Land Surveyor

Geoland Title Limited

Date: [Date]

Example of parcel numbering

Parish	11	06	003	01
Street				
Parcel #				116600301

Checked by: [Signature]

Scale: 1:2000

Grid Interval: 300 m

CONSTRUCTION MAP OF PART OF SOUTHFIELD SEAVIEW

also known as

ST. ELIZABETH

Scale: 1:2000

Grid Interval: 300 m

CONSTRUCTION MAP OF PART OF SOUTHFIELD SEAVIEW

also known as

ST. ELIZABETH

NOTES

- Parcel No. 116600302 supersede plan bearing P.L.41278.
- Parcel No. 116600303 supersede plan bearing P.L.41278.
- Parcel No. 116600304 supersede plan bearing P.L.41278.

LEGEND

Survey Datum JAD2001

Checked by: [Signature]

Scale: 1:2000

Grid Interval: 300 m

CONSTRUCTION MAP OF PART OF SOUTHFIELD SEAVIEW

also known as

ST. ELIZABETH

LEGEND

Parish	Code	Parish	Code
St. Andrew	01	St. Andrew	01
St. David	02	St. David	02
St. George	03	St. George	03
St. James	04	St. James	04
St. John	05	St. John	05
St. Mark	06	St. Mark	06
St. Matthew	07	St. Matthew	07
St. Michael	08	St. Michael	08
St. Patrick	09	St. Patrick	09
St. Peter	10	St. Peter	10
St. Paul	11	St. Paul	11

Scale: 1:2000

Grid Interval: 300 m

CONSTRUCTION MAP OF PART OF SOUTHFIELD SEAVIEW

also known as

ST. ELIZABETH